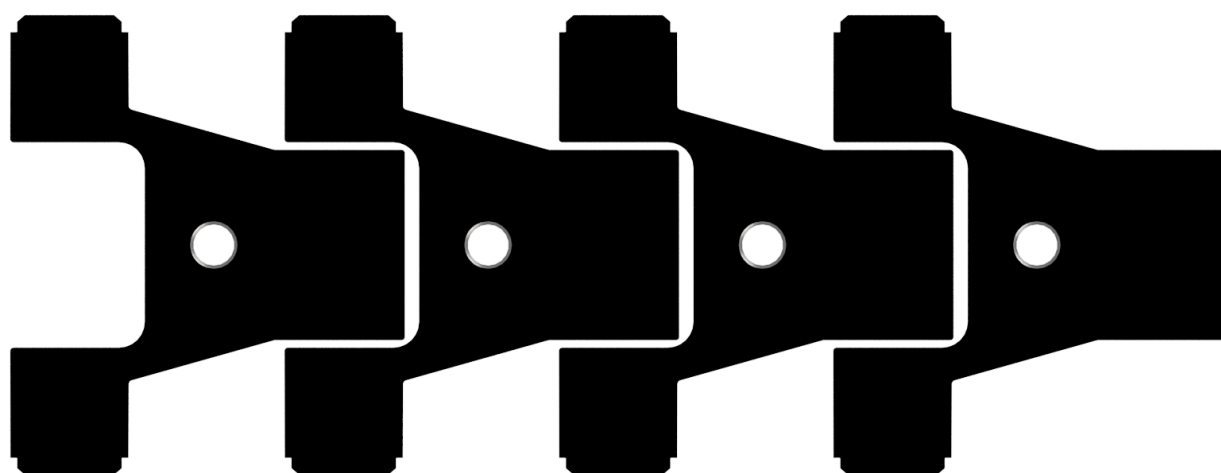
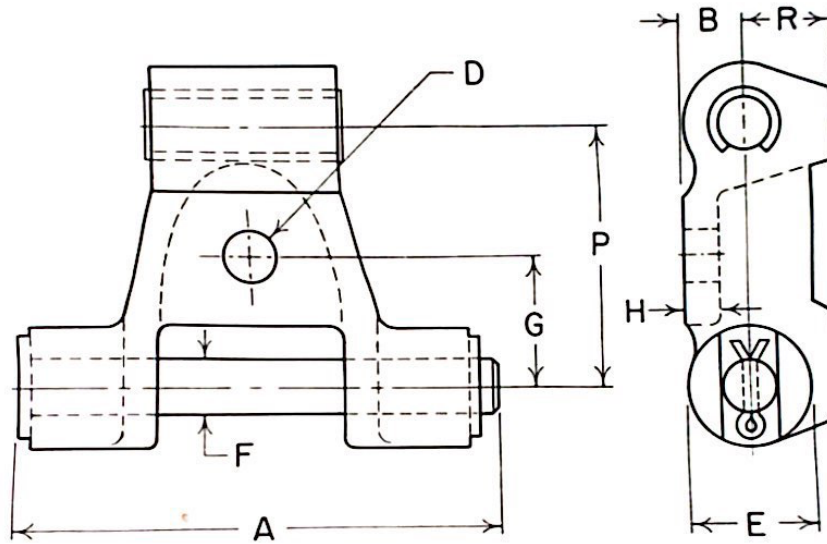


DATOS TÉCNICOS
PINTLE 900



INDUSTRIA AZUCARERA



REFERENCIA	PESO POR PIE (lbs)	RESIST. TRACC. (lbs)	CARG. TRAB. (lbs)	PASO	A	B	C	d	D2	E	F	G	H	I	J	R	T
907 E51	12,20	35.000	4.200	80,52			139,70	18,26			15,88	47,63	15,88	42,86	9,13		23,81
907 E51 acero carbono	12,20	25.000	3.000	80,52	139,70	18,26			15,88	47,63	15,88	42,86	9,13				23,81
907 E51 Inoxidable	12,20	35.000	4.200	80,52	139,70	18,26			15,88	47,63	15,88	42,86	9,13				23,81
WH 907 E51	13.20	56.000	6.500	80,52	160,34	18,26			15,88	47,63	19,05	42,86	9,53				36,51